

«EGALEO SUITES»







Investment project
Athens, Greece

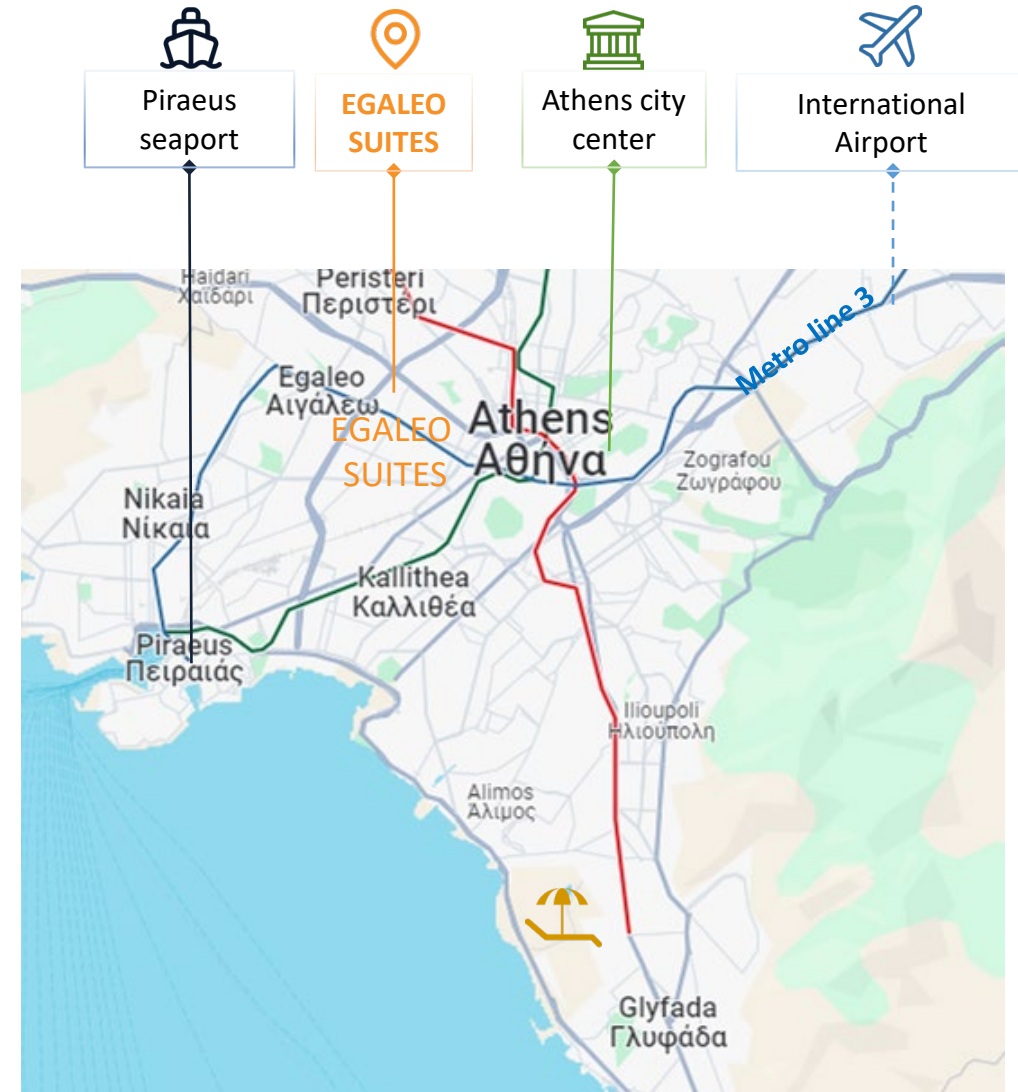
Participates in the program
GOLDEN VISA 250 000 €



Easy accessibility

3 minutes walk from Egaleo metro station

- Piraeus seaport**
 -  6 stations
 -  20 minutes
- EGALEO SUITES**
 -  4 stations
 -  12 minutes
- Athens city center. Acropolis. Syntagma**
 -  15 stations
 -  40 minutes
- Athens International Airport**



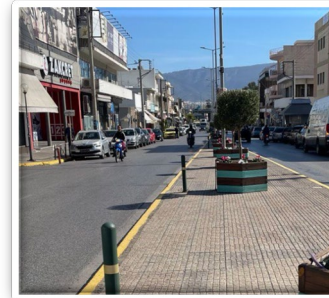
LOCATION

DESCRIPTION

FLOOR PLANS

DESIGN

PRICE



EGALEO SUITES

Developed infrastructure and high rental potential

100 m shops/cafe

150 m Egaleo metro station

200 m supermarket/pharmacy

500 m park and SportsCenter

700 m central highway

1,5 km University of West Attica

EGALEO SUITES = A RELIABLE INVESTMENT

Construction and Paper Status



3 apartments (52–59 m²) on the ground floor with separate entrances and balconies



Official residential status (Building permit)



Solid brick walls and thermal insulation of the whole building



Renovated facade and new utility systems (plumbing/wiring)



High liquidity: "city townhouse" format

Equipment and Comfort



Italian porcelain tiles and premium sanitaryware



Built-in kitchens and wardrobes included (Furniture/appliances/lighting package available at an extra cost)



Double-glazed windows with argon and security shutters



Solar panels for hot water, split A/C systems, and alarm (pre-installation)



Security doors with high thermal and sound insulation.

Egaleo Suites is part of our Egaleo Studios project (full renovation of the 1st and 2nd floors completed in 2025)

LOCATION

DESCRIPTION

FLOOR PLANS

DESIGN

PRICE

APARTMENT 3

Living: **59,74 m²**

Balcony: **5,20 m²**

APARTMENT 1

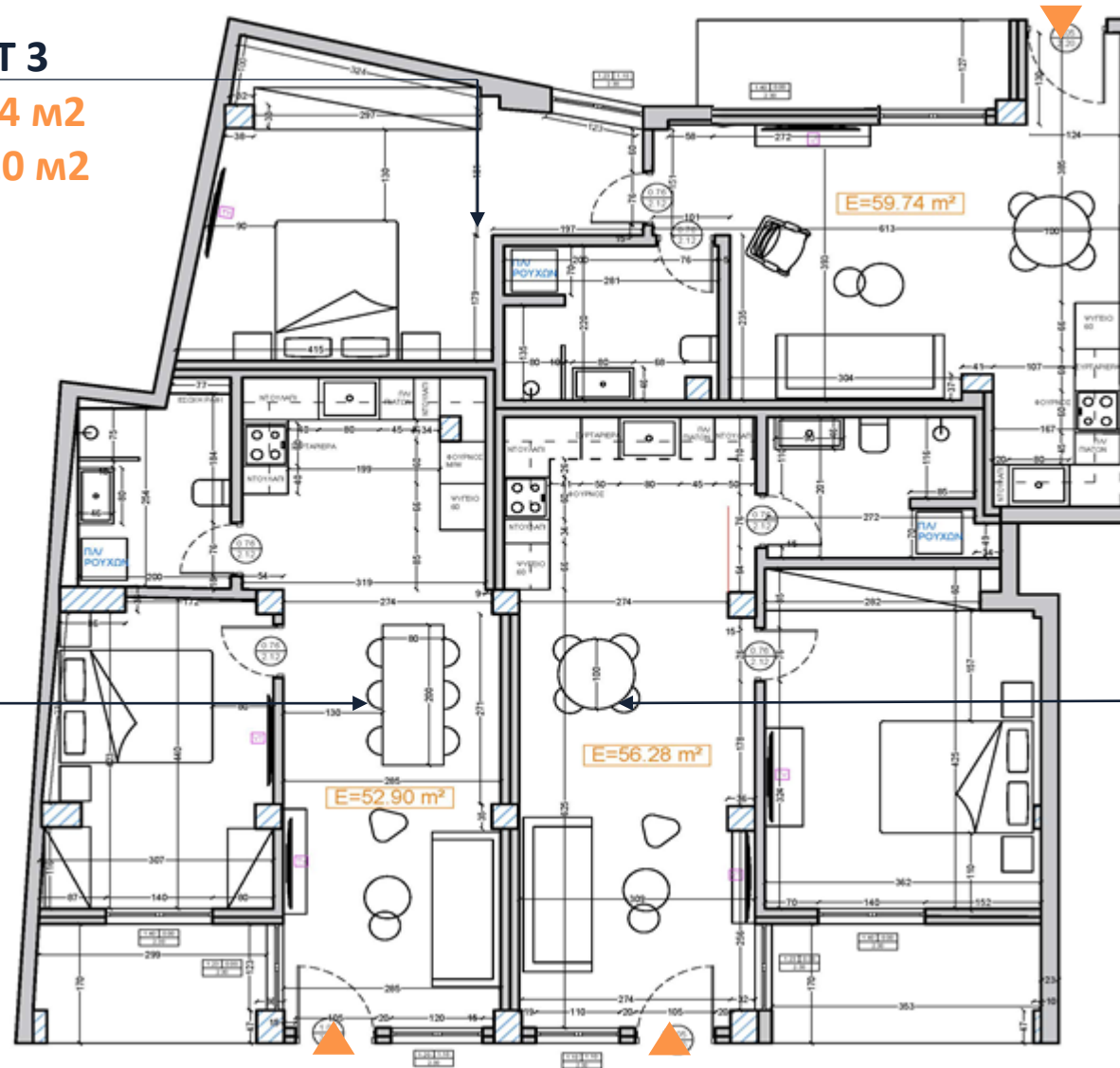
Living: **52,90 m²**

Balcony: **5,00 m²**

APARTMENT 2

Living: **56,28 m²**

Balcony: **6,00 m²**



LOCATION

DESCRIPTION

FLOOR PLANS

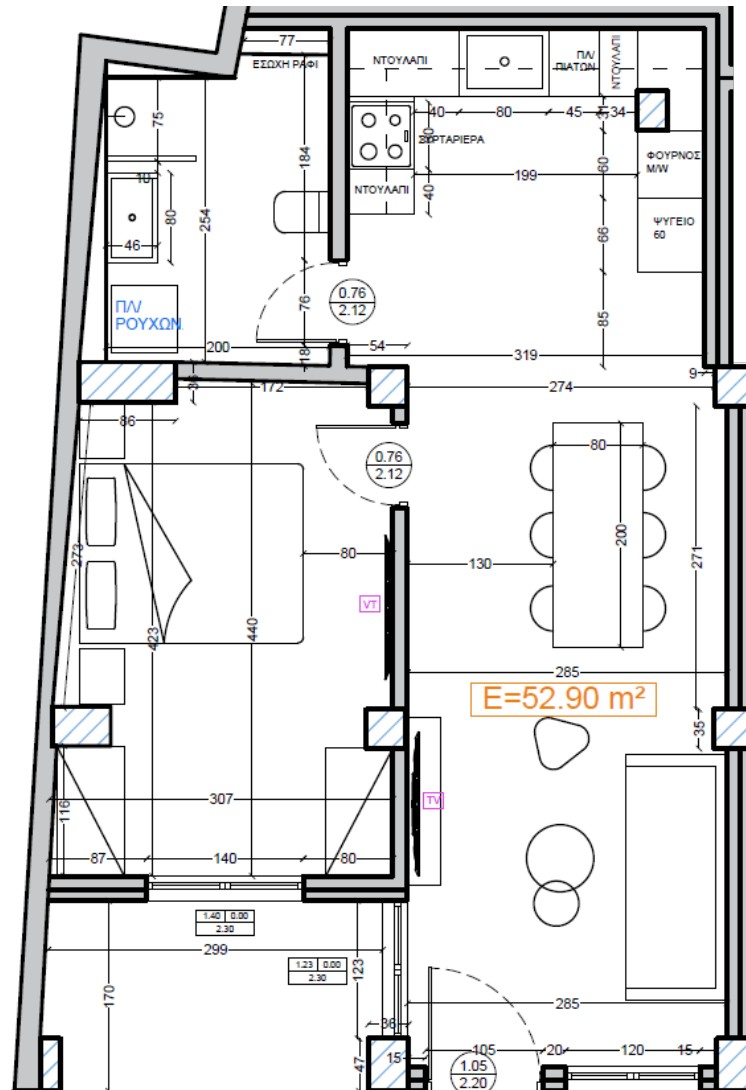
DESIGN

PRICE

APARTMENT 1

52,90 m²

1 BEDROOM
1 BATHROOM
1 BALCONY (5,00 m²)



The arrangement of bathroom and kitchen elements can be changed

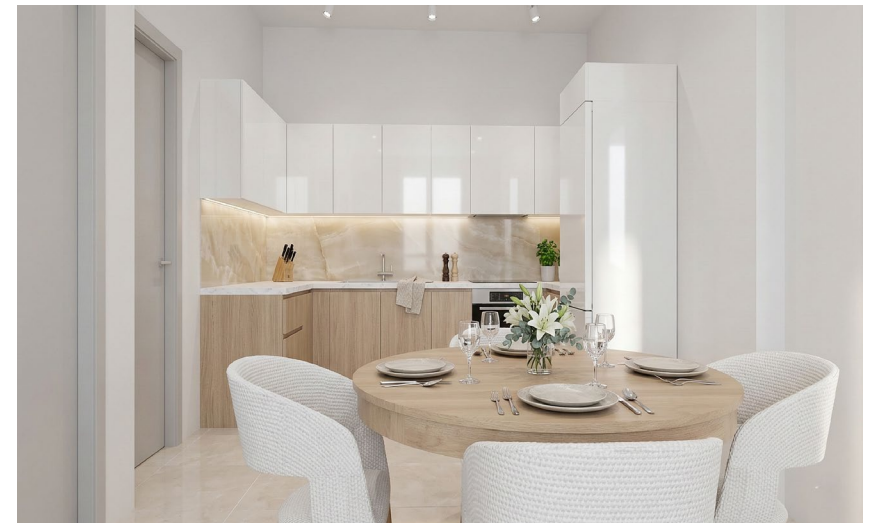
LOCATION

DESCRIPTION

FLOOR PLANS

DESIGN

PRICE



APARTMENT 1 | APARTMENT 2 | APARTMENT 3

LOCATION

DESCRIPTION

FLOOR PLANS

DESIGN

PRICE



APARTMENT 1 | APARTMENT 2 | APARTMENT 3

LOCATION

DESCRIPTION

FLOOR PLANS

DESIGN

PRICE



APARTMENT 1 | APARTMENT 2 | APARTMENT 3

LOCATION

DESCRIPTION

FLOOR PLANS

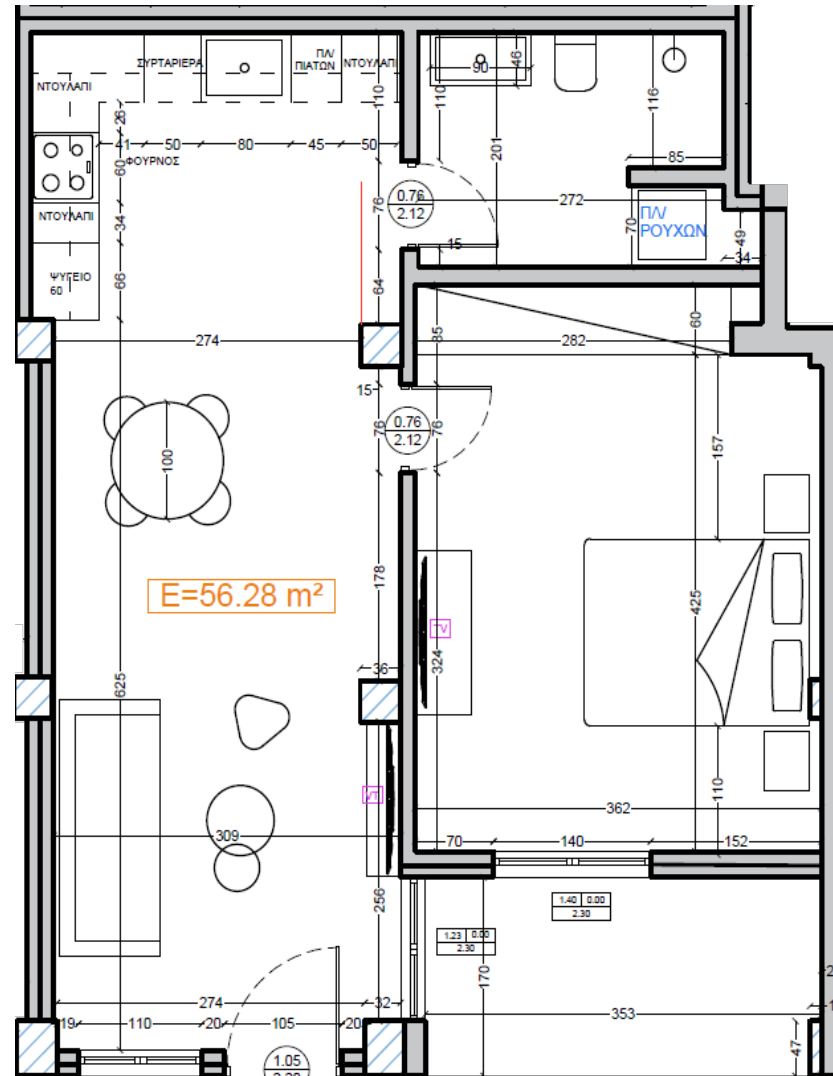
DESIGN

PRICE

APARTMENT 2

56,28 m²

- 1 BEDROOM
- 1 BATHROOM
- 1 BALCONY (6,00 m²)



The arrangement of bathroom and kitchen elements can be changed

LOCATION

DESCRIPTION

FLOOR PLANS

DESIGN

PRICE



APARTMENT 1 | **APARTMENT 2** | APARTMENT 3

LOCATION

DESCRIPTION

FLOOR PLANS

DESIGN

PRICE



LOCATION

DESCRIPTION

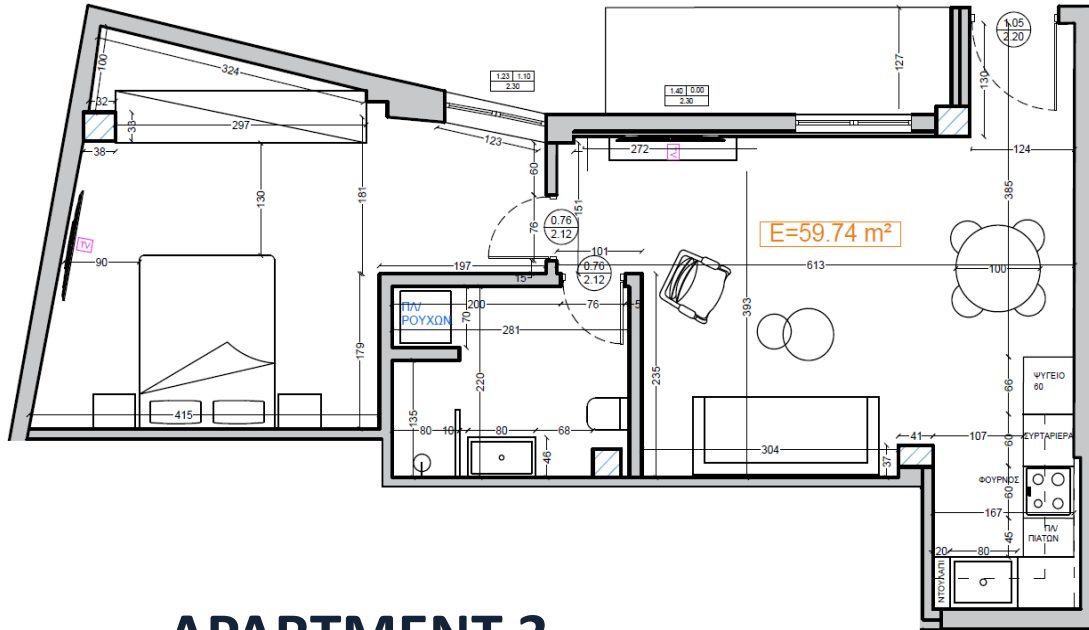
FLOOR PLANS

DESIGN

PRICE



APARTMENT 1 | **APARTMENT 2** | APARTMENT 3



APARTMENT 3

59,74 m²

- 1 BEDROOM
- 1 BATHROOM
- 1 BALCONY (5,20 m²)



The arrangement of bathroom and kitchen elements can be changed

LOCATION

DESCRIPTION

FLOOR PLANS

DESIGN

PRICE



APARTMENT 1 | APARTMENT 2 | **APARTMENT 3**

LOCATION

DESCRIPTION

FLOOR PLANS

DESIGN

PRICE



LOCATION

DESCRIPTION

FLOOR PLANS

DESIGN

PRICE



APARTMENT 1 | APARTMENT 2 | **APARTMENT 3**

LOCATION

DESCRIPTION

FLOOR PLANS

DESIGN

PRICE

250 000 €

Any apartment of your choice

Participates in the program **GOLDEN VISA 250 000 €**

